



Lake Minnetonka Conservation District Newsletter

Message from the Chair



This past January, I was given the privilege to once again serve as Chair of the LMCD Board of Directors. I previously served in this capacity from 1995 to 2000 and look forward to my continued involvement with the numerous issues pertaining to Lake Minnetonka in 2011. I am following in the footsteps of former LMCD Board Chair Lisa Whalen who served from 2008-2010. I commend her efforts and accomplishments during those busy years.

As many of you know, the official ice-out date for 2011 was Thursday, April 14th, which was very close to the average ice-out date of April 15th. However, 2011 brought a new twist to ice-out due to the issuance of a High Water Declaration on that very same day. This is the first time in memory that those two events have directly coincided. Since the High Water Declaration was made, the LMCD has worked very closely with the Hennepin County Sheriff's Water Patrol and the Minnehaha Creek Watershed District (MCWD) to ensure public communication is occurring broadly and expediently. Further information on the High Water Declaration is detailed on page 2 of this Newsletter. Please slow down and reduce your wake.

The LMCD's Save the Lake Committee is making excellent progress in increasing tax deductible donations to our Save the Lake Fund. We truly appreciate the numerous and ongoing donors who take Lake Minnetonka issues to heart and financially support the many efforts of the LMCD on a voluntary basis. All of you collectively make quite a difference! An update on Save the Lake activities is provided on page 3 by Save the Lake Committee Chair Bill Olson.

The LMCD, through both its governmental authority and our Save the Lake efforts, continues to provide leadership and coordination for Aquatic Invasive Species (AIS) programs for Lake Minnetonka. I joined the LMCD Board

shortly after milfoil was first discovered in Lake Minnetonka in the late 1980s and last year we added another significant invader to our list, the Zebra Mussel. We continue to depend greatly on the long standing partnerships established with multiple Lake Minnetonka stakeholders. In 2011, we will be working closely with the MN DNR to increase the levels of inspection and enforcement at many of our public launches and access points to; (1) continue our diligence around preventing new AIS from being introduced into Lake Minnetonka, and (2) ensure that the spread of AIS to other lakes and rivers is curtailed. We are also directly supporting and funding the 5-year herbicide treatment program on Gray's, Phelps and Carman's Bays and are supportive of the two new treatment efforts this year on St. Alban's and Gideon's Bays. AIS prevention and management programs planned for 2011 are detailed on page 4.

Since its inception in 1967, the LMCD has established rules and regulations pertaining to docking and boat storage on Lake Minnetonka. These rules define a site's Dock Use Area (DUA) and specify the allowed number of watercraft for each type of lakeshore site. Information on our rules and regulations for residential sites is summarized on page 5. Please contact our helpful staff if you have any questions.

Pay heed to the current high water restrictions, please slow down, and take the additional time to relax and enjoy this one-of-a-kind recreational resource. Your favorite Lake Minnetonka destination will still be there when you arrive and the courtesy you're showing to others won't go unnoticed.

Have a safe and wonderful summer on our lake!

Doug
Doug Babcock, Chair

In This Issue

Message from the Chair	1
Lake Minnetonka High Water Declaration	2
2010 Annual LMCD Report	3
Save the Lake Fund	3
Aquatic Invasive Species Programs	4
Dock, Boat Storage, and Summer Rules	5
LMCD Meetings	6
Lake Minnetonka Demographics	6

How Well Do You Know Lake Minnetonka?

Turn to page 5 to learn what past and current commercial and recreational sites are pictured to the right.

1



Lake Minnetonka High Water Declaration

Lake Minnetonka Conservation District (LMCD) Code Section 3.021, “High Water”, outlines the established rules and regulations for times when specific water levels on Lake Minnetonka are present. Per LMCD Code, the Executive Director shall make a High Water Declaration when the Lake elevation is at or above 930.0 feet for a period of eight consecutive days, or has reached or exceeded 930.25 feet. On April 14th (official ice-out date), the LMCD issued a High Water Declaration.

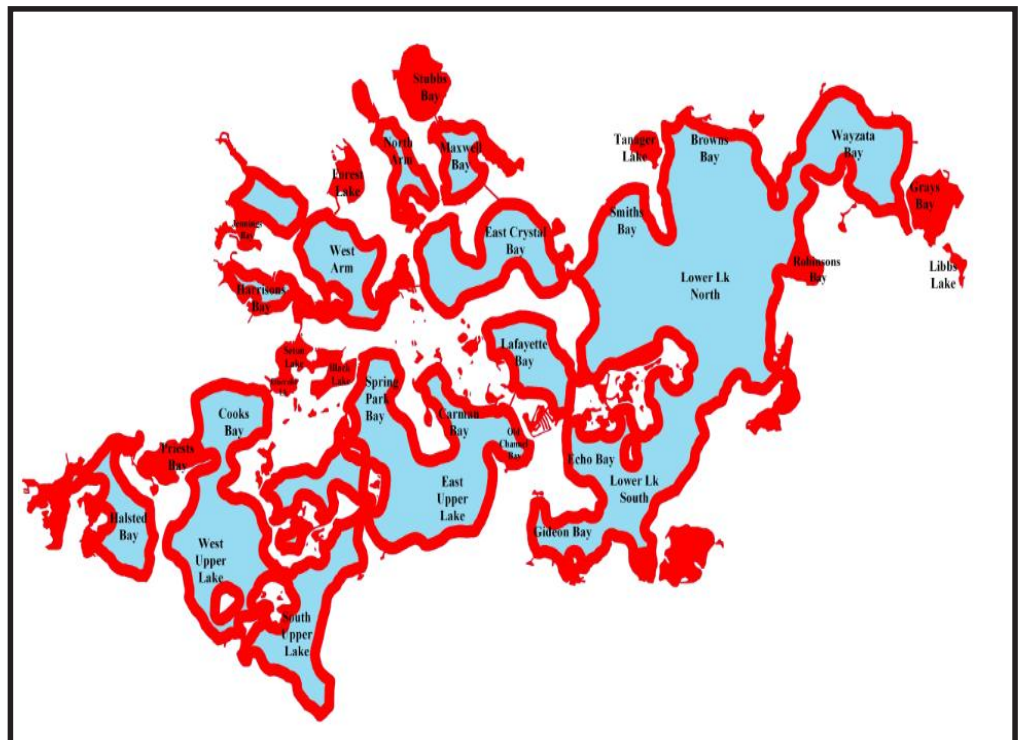
The LMCD has determined that the operation of watercraft at normal speeds during periods of “High Water” has serious adverse effects on the shoreline and existing structures and that the restriction of watercraft wakes during periods of “High Water” is essential to the conservation of shoreline and the overall quality of Lake Minnetonka as a natural resource.

During a High Water Declaration, it is unlawful for a person to operate a watercraft in regulated areas of Lake Minnetonka at a speed more than five miles per hour or at a speed that results in more than a minimum wake. Minimum wake means the wake moving out from the watercraft and trailing behind in a widening “V” is of insufficient size to affect another watercraft or to be detrimental to the shoreline. Regulated areas are defined as the surface use area of the Lake within a distance of 600 feet from the entire shoreline, as well as the entire surface area of a number of bays on the Lake. The map below provides further details of the regulated areas of Lake Minnetonka.

It is unknown whether the High Water Declaration will still be in effect when you receive this newsletter. However, the lake levels will still be high. Therefore, it is important to continue observing the LMCD’s rules and regulations pertaining to the regular speed limits established during normal water level periods, including the areas requiring minimum wake at all times. In particular:

- No person shall operate a watercraft in such a manner that its wash will endanger, harass, or unnecessarily interfere with any person or property.
- No person shall operate a watercraft at a speed greater than minimum wake when within 150 feet from the shoreline, dock, pier, swimmer, authorized scuba diver’s warning flag, or anchored raft/watercraft.

For further information on High Water Declaration for Lake Minnetonka, please contact the LMCD office at (952) 745-0789 or view Code Section 3.021 on the website at www.lmcd.org, under Rules and Regulations. For questions on the management of Lake Minnetonka water levels, which are regulated by the Minnehaha Creek Watershed District, please contact Communications Manager Telly Mamayek at (952) 641-4508 or tmamayek@minnehahacreek.org



Lake Minnetonka High Water Declaration Regulated Areas

LMCD Annual Report and Save the Lake Fund

LMCD 2010 Annual Report: In follow-up to the LMCD's approved Strategic Plan, the LMCD has prepared its Annual Report for 2010.

The Vision for the LMCD's Strategic Plan is "To protect and preserve Lake Minnetonka". Its Mission Statement is "The LMCD provides leadership in protecting, improving, and managing Lake Minnetonka. This is accomplished through administration and regulation; promoting cooperation and partnerships; through innovation and education; and effective stewardship of public and private funds". The LMCD, through its Board of Directors and staff, manage the use of Lake Minnetonka's surface waters with the highest regard and to the best of its ability.

Activities and projects of the LMCD are done in compliance with objectives and goals detailed in the Strategic Plan. The 2010 Annual LMCD Report addresses a goal in the Strategic Plan to improve the public's awareness of the LMCD. This Report will provide you further background of the following:

- General background of the LMCD;
- An overview of the LMCD Strategic Plan;
- An overview of 2010 LMCD projects and activities; and

- An overview of 2011 LMCD programs and activities planned.

Management efforts require a great deal of cooperation and partnerships with a number of other public and private organizations. A few of these include:

- 14 Lake Minnetonka communities;
- Hennepin County Environmental Services;
- Hennepin County Sheriff's Water Patrol;
- Lake Minnetonka Association;
- Minnehaha Creek Watershed District;
- Minnesota Department of Natural Resources;
- Three Rivers Park District;
- U.S. Army Corps of Engineers;
- Commercial Stakeholders (including marinas, charter boats, and dock installers); and
- General Public

A copy of the annual report can be viewed on the LMCD's website at www.lmcd.org, under Reports. Your feedback, and any questions that you may have, can be directed to the LMCD Executive Director Greg Nybeck at gnybeck@lmcd.org.



Save the Lake Fund: Save the Lake is a non-profit initiative of the LMCD that was established in the 1970's. Funds received are tax deductible and annually disbursed for projects that meet the established funding criteria. Save the Lake funds are used to supplement projects that are not currently being funded through the approved LMCD budget, which is provided, in most part, by a levy from the 14 Lake Minnetonka area municipalities.

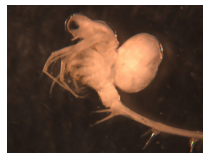
2010 Contributions: The Save the Lake Committee has been diligently working to increase donated funds. Donations received in 2010 (\$42,492) increased by 29% when compared to 2009 (\$32,863). Donations are primarily received based on two Save the Lake solicitation letters that are sent out annually in the spring and fall.

2011 Save the Lake Projects: Last October, Save the Lake funds were available for proposed projects in 2011. Seven proposals were received, in which three were funded. These proposals included: 1) \$30,000 for the Coordinated Herbicide Treatment Project (managed by the Lake Minnetonka Association) for Carman's, Gray's, and Phelps Bays, 2) \$5,451 for the purchase of public safety equipment for use specifically on Lake Minnetonka by the Hennepin County Sheriff's Water Patrol, and 3) \$5,430 to improve public safety on Lake Minnetonka by partially funding a new fire rescue boat and safety equipment for the Wayzata Fire Department. Additional Save the Lake funds were appropriated to continue expansion of the LMCD solar-light program to assist in nighttime navigation. This project was initiated in 2002 by the LMCD through the Save the Lake Fund.

2011 Fund Raising Initiatives: The Save the Lake Committee is currently exploring the following three fund-raising initiatives to increase contributions: 1) the sale of Lake Minnetonka aerial photographs by Vern Whitten Photography, 2) sponsorship of the Theater on Lake event coordinated by Marine Max, and 3) sales of a Save the Lake boat sticker providing for reduced fuel costs at participating Lake Minnetonka gas docks. These initiatives are currently being finalized and further details will be announced by the LMCD in the near future.

For more information on the Save the Lake Fund, please call the LMCD at (952) 745-0789 or visit the LMCD website at www.lmcd.org, under Save the Lake.

2011 Aquatic Invasive Species (AIS) Preventative and Management Programs



Eurasian Watermilfoil (EWM): The LMCD's mechanical harvesting program, which addresses impediments to public navigation, is scheduled to commence in early June and continue through mid August. The North Upper Lake Option is scheduled to be implemented in 2011, which will depend on a lakewide EWM growth assessment planned in early June. Harvesting will be conducted Monday through Thursday via 10-hour work days. Weekly updates and the rotating harvesting schedule will be placed on the front page of the LMCD's website for your convenience. As always, you are welcome to call the office with any questions that you may have.

Herbicide Treatment Program: The LMCD, in partnership with the Lake Minnetonka Association (LMA) and a number of governmental agencies, will

continue to participate in a Coordinated Herbicide Treatment Project on Carman's, Gray's, and Phelps Bays. 2011 is the fourth year of a five-year pilot project on these three bays to evaluate the use of herbicide treatments as another means of managing EWM in the Lake, with the LMA serving as project manager. The LMCD's involvement on this project has been to provide partial funding of the herbicide treatments utilizing "Save the Lake" Funds, as well as the continued assessment of the project, based on an approved Lake Vegetation Management Plan (LVMP), by the LMCD's Aquatic Invasive Species (AIS) Task Force. In late 2011, the Task Force will assess the final results of the fourth year of this project to evaluate potential expansion to other bays on Lake Minnetonka in 2013. This evaluation will take into consideration the goals and objectives of the LVMP, as well as assessing the cost effectiveness of the use of herbicides. The LMCD is not participating in the herbicide treatment projects planned for Gideon's and St. Albans' Bays in 2011, which are being coordinated by the LMA and the residents of these bays.

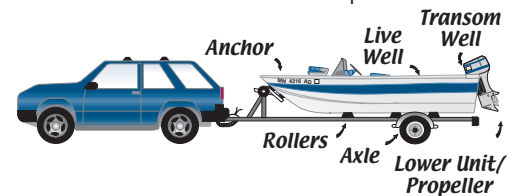
Public Access Inspection Program: The LMCD has been addressing its primary goal to prevent new Aquatic Invasive Species (AIS) in Lake Minnetonka since the late 1990's. One of the programs utilized since 2002 has been the Watercraft Inspection Program. Since that date, the LMCD has been contracting with the MN DNR to provide trained staff to inspect incoming watercraft and trailers at selected public accesses. Additionally, inspections have been supplemented via the use of MN DNR trained inspectors from employment agencies, volunteers, and in-kind services of the Three Rivers Park District (TRPD). From 2002 through 2010, over 17,000 hours of watercraft inspections were coordinated from Memorial Day weekend through Labor Day on incoming watercraft and trailers during peak days and times. With the zebra mussel discovery in Lake Minnetonka last July, the primary goal of this program in 2011 has diversified.

Over 7,000 hours (4,096 in 2010) of watercraft inspections are planned in 2011 by the MN DNR, LMCD (via continued use of an employment agency), and TRPD. The priorities established for this program include the following: 1) inspection of incoming watercraft and trailers to prevent a new AIS introduction into Lake Minnetonka (including the spread of zebra mussels to non-infested bays) and 2) inspection of outgoing watercraft in an attempt to manage the containment of zebra mussels, and other AIS, from spreading to other bodies of water. Funding sources for the 2011 inspections include the LMCD, MN DNR, TRPD, and Minnehaha Creek Watershed District, all of which were funding sources in 2010.



STOP AQUATIC HITCHHIKERS!

Minnesota waters are threatened by many invasive species. It is illegal to transport any aquatic plants, zebra mussel, New Zealand mudsnail or other prohibited invasive species on public roads, or to launch a boat or trailer with these species attached.



How you can help stop their spread:

- ✓ **Remove** visible aquatic plants and animals from your boat, trailer, and other boating equipment before leaving the water access (see diagram).
- ✓ **Drain** water from your boat, motor, live well, and bait containers before leaving the water access. This is required at posted *infested waters*.
- ✓ **Spray, rinse, or dry** boats and recreational equipment to remove or kill species that were not visible when leaving a water body. Before transporting to another water body:
 - ★ **spray/rinse** with high pressure and/or hot tap water (above 120°F or 49°C) especially if moored for more than a day; **or**
 - ★ **dry** for at least 5 days.
- ✓ **Dispose** of unwanted bait in the trash.

For more information, contact the DNR Invasive Species Program, Ecological Resources, at (651) 259-5100 or (888) 646-6367 or visit www.mndnr.gov/invasives

Copyright MN DNR - Used with Permission

DOCK USE AREA AND WATERCRAFT DENSITY RULES FOR SINGLE FAMILY RESIDENTIAL SITES

LMCD Ordinances provide for the rules and regulations of Lake Minnetonka. A full listing of those rules are found on the LMCD website under Rules and Regulations. Chapter 2 outlines the rules governing the area and number of which docks and boat storage are allowed. A brief description of those rules is provided below. Additionally, you are encouraged to contact your local municipality as well.

Defining Your Dock Use Area (DUA)

Length	Side Setbacks
Width of lakeshore frontage (maximum 100')	0' to 50' out from shore: 10'
Frontage between 40' & 60' (in existence on 2/5/70) may extend dock to 60'	50' to 100' out from shore: 15'
Frontage less than 40' may extend dock to 4' of water depth or 60', whichever is less	Canopies (3/4 side coverage): 20'
Dock Standards (Including Decks and Platforms) May exceed 8' in length or width, but not both directions.	Frontage with 50' or less (in existence on 2/2/70): 5'
	Side opening slips: depth of the slip w/min. 20'
	Consenting neighbors may combine their DUA for a common dock or adjust interior setbacks. Exterior setbacks apply. Five or more restricted watercraft require a license.

Defining Unrestricted Watercraft (Unlimited within DUA)

16' or less in length and unmotorized or which uses a motor of 10 hp or less
20' or less in length and unmotorized and which is propelled solely by human power

Watercraft Density for Restricted Watercraft (All but unrestricted; includes PWC's)

The General Rule is one restricted watercraft for each 50' (1:50') of continuous shoreline. Reference to ownership is not required, but five or more watercraft require a license by the LMCD; or,

Unless a greater number is allowed by the General Rule, up to two restricted watercraft may be allowed at a residential site in existence on August 30, 1978. Reference to ownership is not required; or,

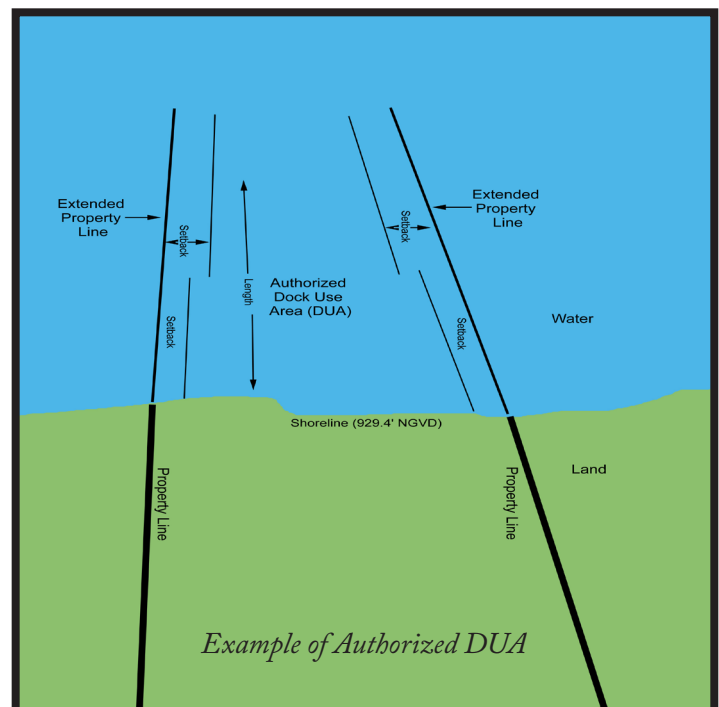
Three or four restricted watercraft may be moored or docked at all sites, provided specific conditions are met. Some of which include: 1) single family residence only, 2) exclusive dockage rights by site's owner, 3) all restricted watercraft owned by and registered to persons living on site.

LMCD Summer Rules

It is the responsibility of the watercraft operator to comply with all Lake Minnetonka rules. Signage with a drop box holding summer rule pamphlets are installed at most major public accesses. As always, feel free to call the LMCD with questions or to have a summer rules pamphlet mailed to you.

How Well Do You Know Lake Minnetonka?

The 1960's historical picture of Tonka Bay Marina, Inc. (known then as Tonka Bay Boat Works, Inc.) is pictured on page 1, as well as the former Tonka Bay Village Hall (second structure in on the right) and former Tonka Men's Club Little League Baseball field.





23505 Smithtown Road, Suite 120
Shorewood, MN 55331

Phone: 952.745.0789 Fax: 952.745.9085
Monday-Friday 8 a.m. to 4:30 p.m.

www.lmcd.org

Greg Nybeck, Executive Director

BOARD MEMBERS:

- Doug Babcock, Tonka Bay (Chair)
- Dan Baasen, Wayzata (Vice Chair)
- Andrew McDermott III, Orono (Secretary)
- Kelsey Page, Greenwood (Treasurer)
- David Gross, Deephaven
- Anne Hunt, Minnetrista
- Chris Jewett, Minnetonka
- Steve Johnson, Mound
- Dennis Klohs, Minnetonka Beach
- Jeff Morris, Excelsior
- Bill Olson, Victoria
- Debbie Siakel, Shorewood
- Herb Suerth, Woodland
- Roger Swanson, Spring Park

Printing provided at cost by Precision Graphics, Inc. (www.pgiprint.com)

**LMCD
BOARD MEETINGS**

LMCD Board Meetings are scheduled for the second and fourth Wednesdays of each month at Wayzata City Hall, 600 Rice Street, at 7:00 p.m.

Cable subscribers in the Mediacom viewing area can view these meetings on the Lake Minnetonka Communications Commission (LMCC) Government Channel 20 - Thursday evenings at 7:30 p.m. Additional day time airings are at 9:30 a.m. and 2:30 p.m. Check local listings or their website at www.lmcc-tv.org for details.

Additionally, you may view the meetings on the LMCC's website by utilizing the following three steps:

- Scroll down to "Government Access 20"
- Click "On Demand: Click here to be directed to a listing of our 5 Channel 20 meetings"
- Select LMCD

**LAKE MINNETONKA
DEMOGRAPHICS**

Fourteen (14) Communities:

Deephaven	Excelsior	Greenwood
Minnetonka	Minnetonka Beach	Minnetrista
Mound	Orono	Shorewood
Spring Park	Tonka Bay	Victoria
Wayzata	Woodland	

Physical Features:

• Miles of Shoreline	125
• Acres of Surface Use Area	14,043
• Number of Bays	42
• Mean Water Depth	30'
• Maximum Water Depth (Crystal Bay)	113'
• Surface Use Area Less Than 15'	39%
• Total Population (2009 Est.)	104,940
• Major Public Access Ramps	10