



Lake Minnetonka High Water Declaration

What You Need to Know To Protect the Lake, People, & Property



EFFECTIVE **MAY 31, 2019 1:00PM** until further notice.

CHECK WWW.LMCD.ORG FOR CURRENT STATUS.

IF YOUR WAKE IS HITTING THE SHORELINE AND STRUCTURES, PLEASE SLOW DOWN.

HIGH WATER DECLARED

With high water levels, extensive damage can occur to the lake shoreline, docks and other structures due to wakes created by boaters and winds. These conditions may also lead to accidents and injuries for people, pets, and wildlife. To minimize damages, a "High Water Declaration" is in effect.

Water levels are routinely monitored and managed for Lake Minnetonka and the Watershed. While water levels often fluctuate, Lake Minnetonka's water level is atypically high this year due to record-breaking precipitation and has passed a threshold necessitating additional safeguards.

While Lake Minnetonka remains open for public use and enjoyment, we appreciate your cooperation in protecting the lake and all those who use it.

MAXIMUM SPEEDS

In regulated areas, during High Water Declaration, watercraft may not be operated at a speed:

- 1) greater than **5 miles per hour, or**
- 2) at a speed that creates more than a **Minimum Wake**.

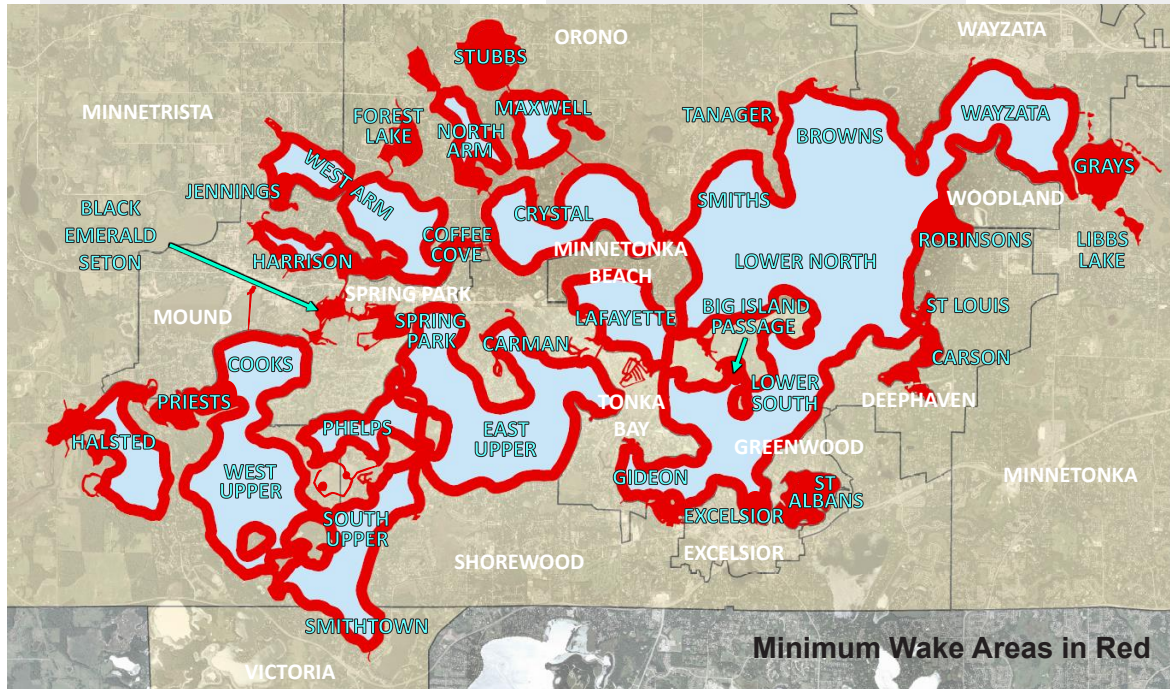
MINIMUM WAKE

Minimum Wake means that the wake moving out from and trailing behind a watercraft in a widening "V" is insufficient in size to affect other watercraft or be detrimental to the shoreline.

MINIMUM WAKE AREAS

Regulated areas of the Lake include:

- 1) within a distance of **600 feet of any shoreline, and**
- 2) all areas of the **specific bays/lakes** listed below.



- Big Island Passage
- Black Lake
- Carsons Bay
- Coffee Cove
- Emerald Lake
- Excelsior Bay
- Forest Lake
- Grays Bay
- Jennings Bay
- Libbs Lake
- Priests Bay
- Robynsons Bay
- St. Albans Bay
- St. Louis Bay
- Seton Lake
- Stubbs Bay
- Tanager Lake

For more information, visit www.lmcd.org or call the LMCD office at 952-745-0789. To report violations, call 911. The Hennepin County Sheriff's Office Water Patrol helps enforce these regulations. Violations may result in citations or other enforcement actions. Water levels can be viewed at www.minnehahacreek.org.