

Lake Minnetonka Vegetation & AIS Master Plan

LMCD Board Workshop
October 9, 2019
6:00 pm

EOR Inc. &
Blue Water Science

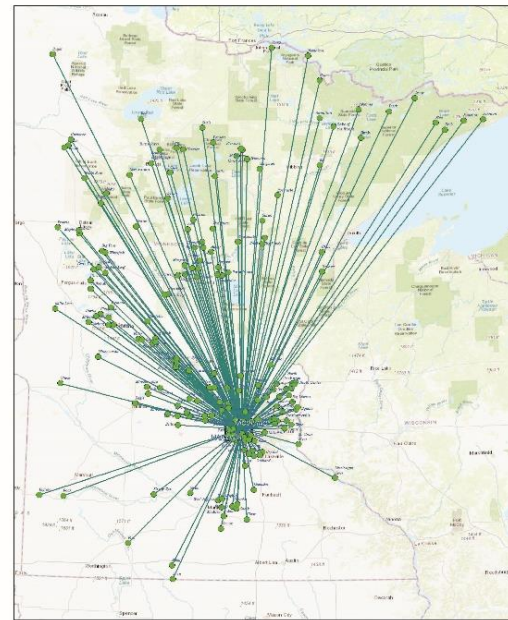


Task 1 & 5: Starry Stonewort Protection Plan

STATUS

- **Completed to date**
 - Initial drafts
 - May
 - Public meeting
 - June
 - TAG discussion
 - July
 - Updated draft
 - August
 - Revised draft
 - September
- **Next Steps**
 - Final TAG review
 - Final document

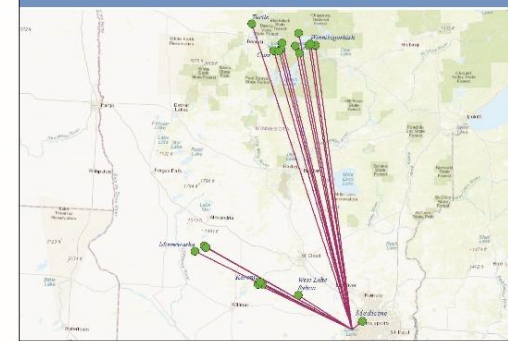
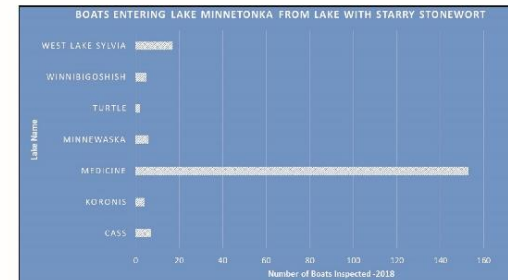
STARRY STONEWORT - PROTECTION AND EMERGENCY ACTION



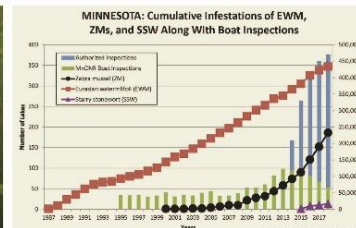
DNR 2019 Watercraft Inspections
Lakes Visited 5 days Prior to Lake Minnetonka



Minnetonka Lake Watercraft Inspection Results (2018)
Miles
0 25 50 75 100



Minnetonka Lake Watercraft Inspection Results (2018)
Miles
0 25 50 75 100



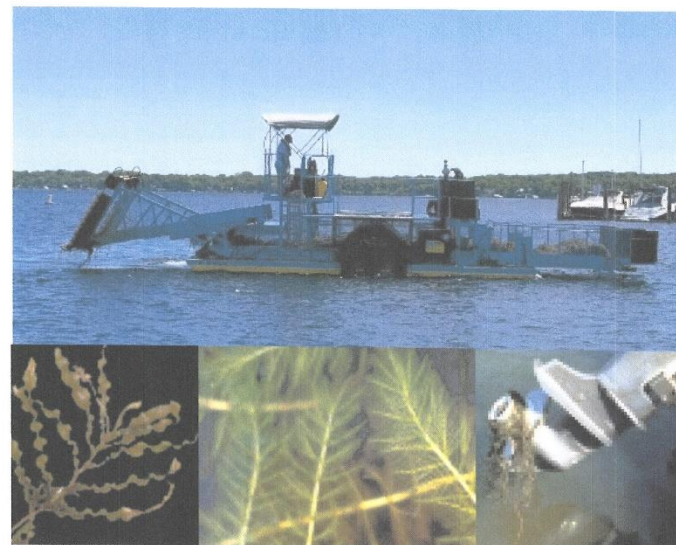
Task 2: Harvesting Program Review

STATUS

- **Completed to date**
 - **Harvesting equipment review**
 - May
 - **Program review outline**
 - June
 - **Public review of harvest maps**
 - June
 - **Prepare info request memo & TAG input on review parameters**
 - July
 - **Received info request response**
 - July
 - **Financial assumptions review**
 - August
 - **Financial model review**
 - September
- **Next Steps**
 - **Prepare final report**



LMCD Harvesting Program Operations & Safety Program Manual

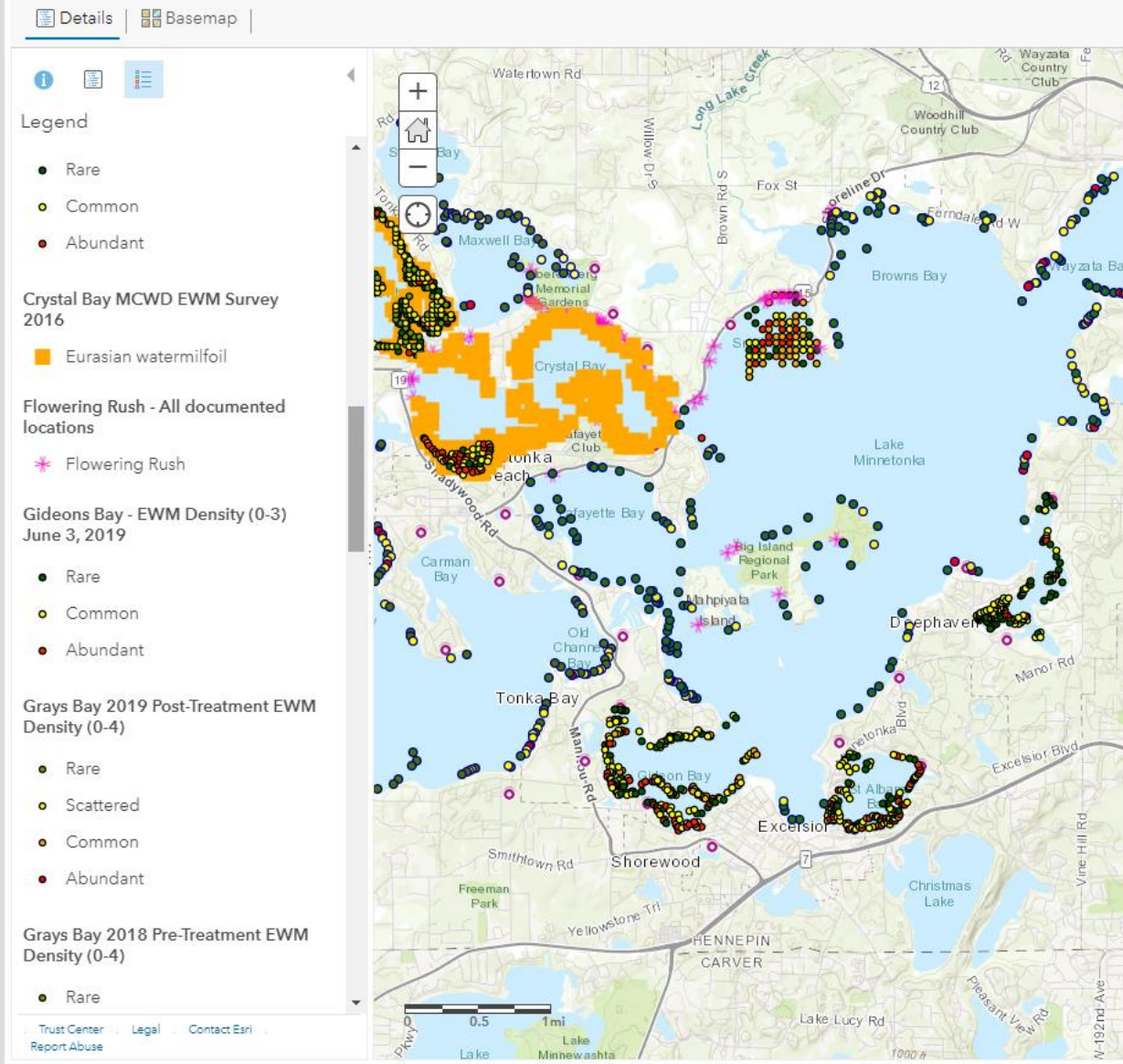


Task 3: GIS Mapping

STATUS

- **Completed to date**
 - Build online GIS tool
 - May
 - Public meeting
 - June
 - Data presented to TAG
 - July
 - Updates to GIS map
 - August
 - Incorporate new data from partners
 - September
 - BWS/EOR lake data
 - September
- **Next Steps**
 - Updates as needed.

ArcGIS ▼ LMCD Vegetation and AIS Master Plan



Task 4: Lake Vegetation & AIS Master Plan

STATUS

- **Completed to date**
 - **Master Plan Outline**
 - July
 - **Master Plan Outline Meeting**
 - July
 - **Input on Master Plan Outline**
 - August
 - **Input on AIS module content**
 - August
 - **AIS Policy Discussions**
 - August
 - **Goals & Roles Memo**
 - September
- **Next Steps**
 - **Review of Goals & Roles by LMCD**
 - **Finalize outline and module**
 - **Master Plan writing**

Category	<i>This is a compilation of existing agency goals found in the plans reviewed for this task.</i>	Existing Planning Documents	Geographic Nature of Goal(s)
Prevention	<u>Work collaboratively to</u> implement procedures and practices to prevent new introductions or dispersal of aquatic invasive species within the District.	<ul style="list-style-type: none"> • MCWD • Minnesota State Mgmt. Plan • LMCD 	<ul style="list-style-type: none"> • Local • Regional
Containment	Develop <u>and implement</u> management strategies to limit the spread of established invasive species to and from the District. Work to detect new invasive species infestations and support the infrastructure necessary to rapidly eradicate, or suppress, and contain high priority infestations.	<ul style="list-style-type: none"> • MCWD • Minnesota State Mgmt. Plan 	<ul style="list-style-type: none"> • Local
Control/ Management	Abate (reduce impacts), and where possible, eliminate harmful ecological, economic, social, recreational, and public health impacts resulting from the infestation of aquatic invasive species in <u>Lake Minnetonka</u> .	<ul style="list-style-type: none"> • MCWD • Minnesota State Mgmt. Plan • MAISRC • LMCD 	<ul style="list-style-type: none"> • Local
Leadership & Coordination	Collaborate with intrastate, interstate, and international partners to help coordinate invasive species related efforts.	<ul style="list-style-type: none"> • Minnesota State Mgmt. Plan • MAISRC • LMCD • LAAF 	<ul style="list-style-type: none"> • Local • Regional

Task 6: Presentations & Meetings

STATUS

- **Completed to date**
 - **Draft Engagement Plan**
 - May
 - **Media release**
 - May
 - **Project flyer**
 - June
 - **Public Meeting #1**
 - June
 - **TAG Meeting #1**
 - July
 - **Attend Board Workshop**
 - October
 - **LMCD Staff meetings- ongoing**
- **Next Steps**
 - **TAG Meeting #2**
 - **CAG Coordination**



LAKE MINNETONKA
CONSERVATION DISTRICT
5341 Maywood Rd - 200
Mound, Minnesota 55364
Phone: 952-746-0789
Website: www.lmcd.org
Twitter: @LakeMnkaCD
Facebook: @LakeMinnetonkaConservationDistrict

The Lake Minnetonka Vegetation and Aquatic Invasive Species Master Plan

will address the dynamic lake management activities needed to preserve and enhance the lake's ecology, recreational, and economic experience. The project is currently underway and completion is expected by the end of 2019.

What's the Challenge?

- AIS threats are real and imminent
- Unmanaged lake vegetation can affect ecology, recreation, public safety, and the economy
- Many partners are needed to manage lake vegetation & AIS-unified vision, leave no gaps

Why LMCD is Taking the Lead?

- LMCD represents the lake, has established partners & history
- LMCD organizationally and legally is structured to manage and administer funds/programs
- LMCD considers interests of all stakeholders such as cities, residents, visitors, organizations, businesses, and others in its decision process

Our Approach?

- Develop master plan to guide lake vegetation & AIS management activities using the most current scientific data and innovative approaches
- Develop action plan to address most imminent threat first- Starry Stonewort
- Compile and inventory existing lake vegetation and AIS data- develop public webmapping tool
- Lake weed harvesting- determine if it is beneficial and key requirements for a successful program in relation to alternative control methods for existing and future threats
- Outreach, communication, stakeholder participation, public data collection

Be Involved!

Public:

- Be Informed - attend meetings, Website, Twitter, Facebook
- Be Engaged - provide input, Social Pinpoint

Advisory Groups:

Assist in decision making

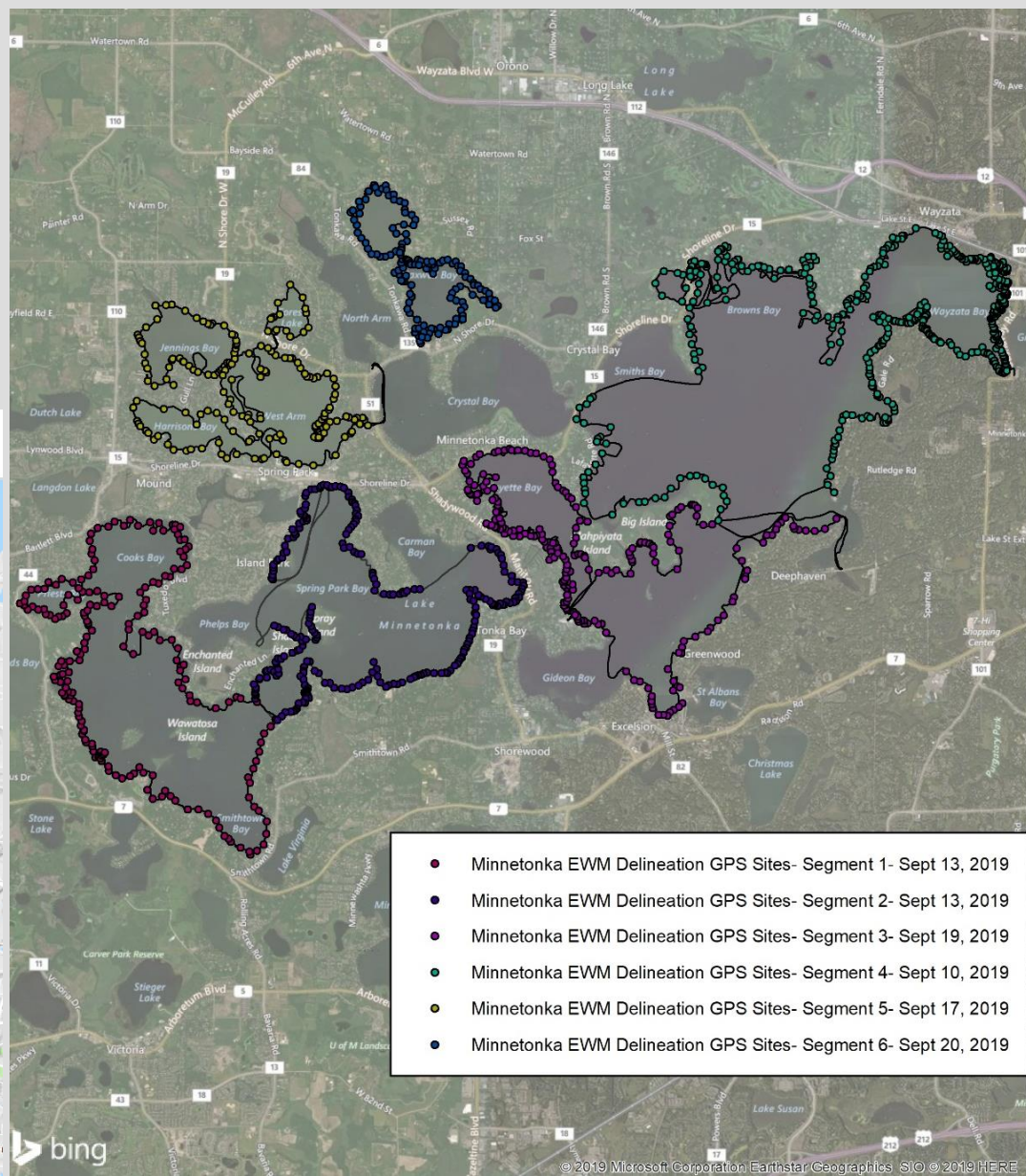
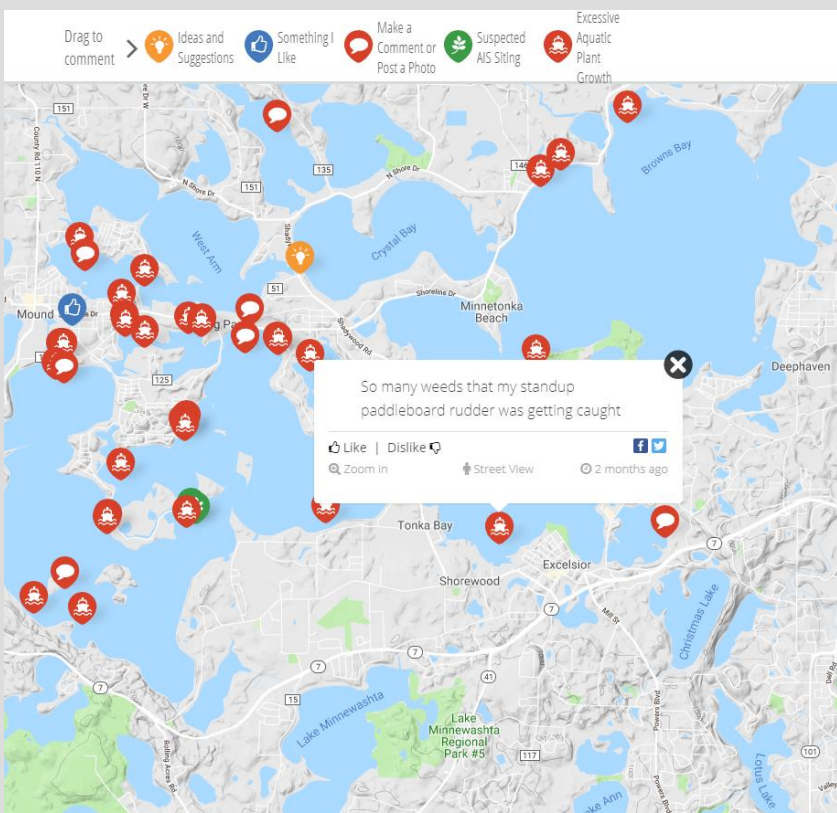
Implementation Partners:

Develop solutions, put plan in action



Task 7: AIS Program Support

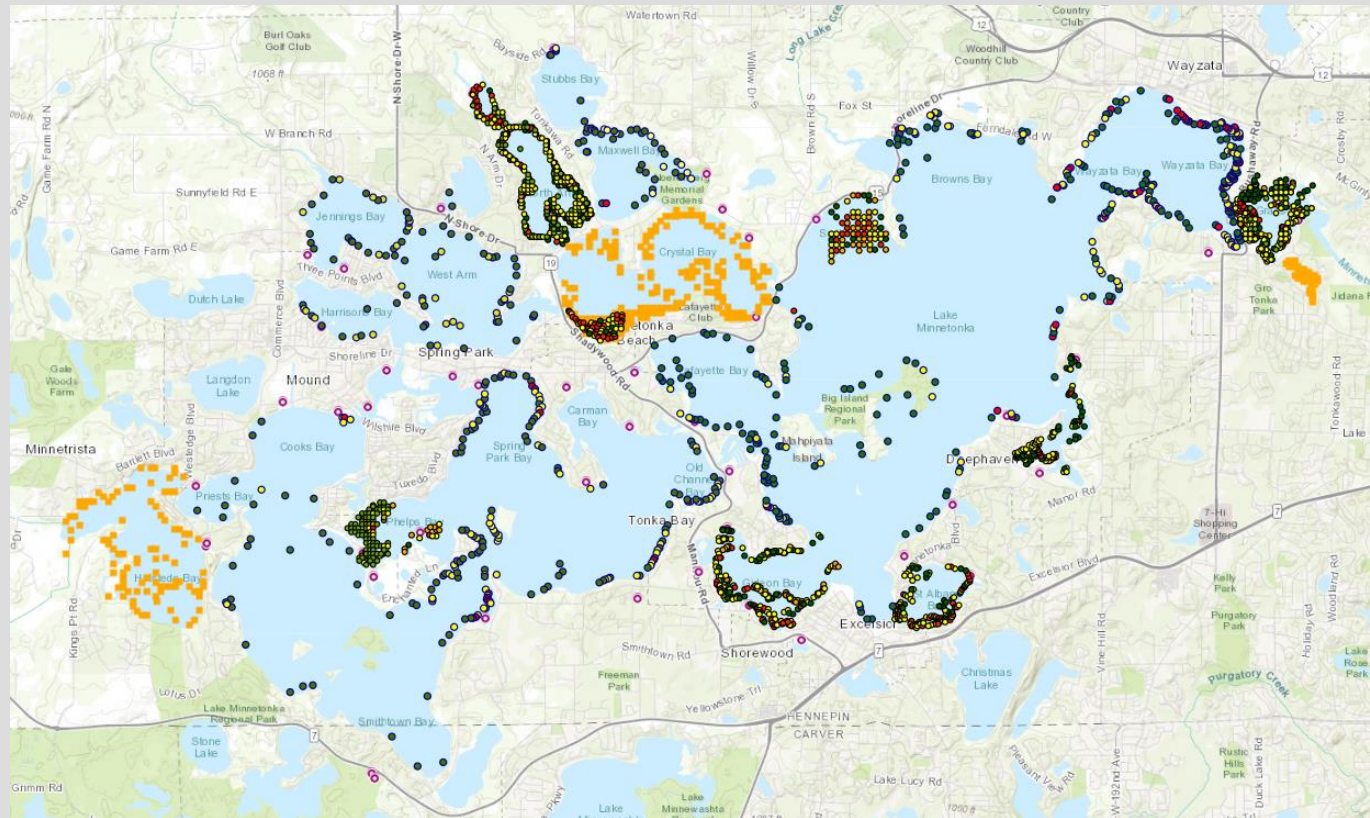
- Completed to Date
 - Public Survey
 - Social PinPoint Web Tool
 - Lake Vegetation Survey-baseline & long term



Harvesting Program Discussion

KEY TOPICS

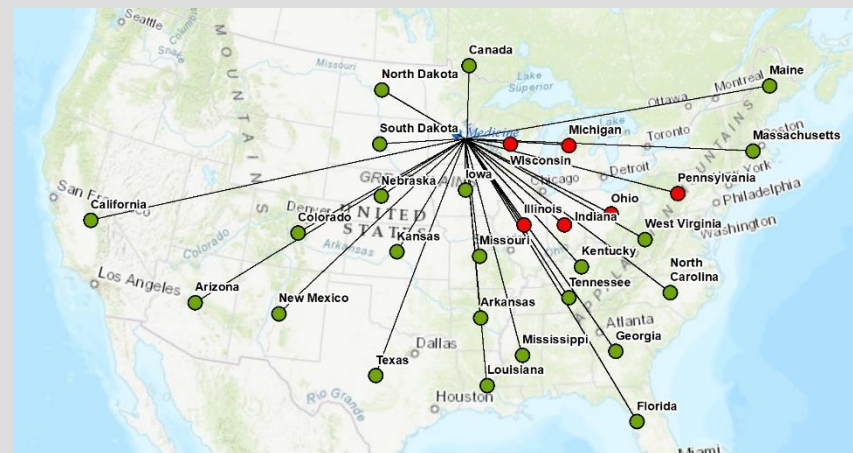
- Data collected in 2019
- What will lake look like in 20yrs if we continue, quit or modify program?
- Is lake at equilibrium?
- What should LMCD consider for 2020?
- Seek input from TAG, CAG and general public



Starry Stonewort & Flowering Rush Discussion

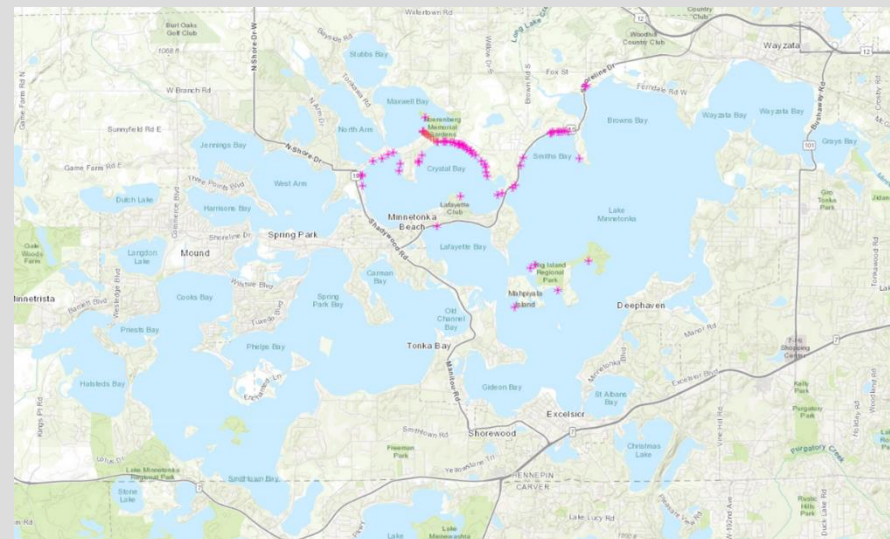
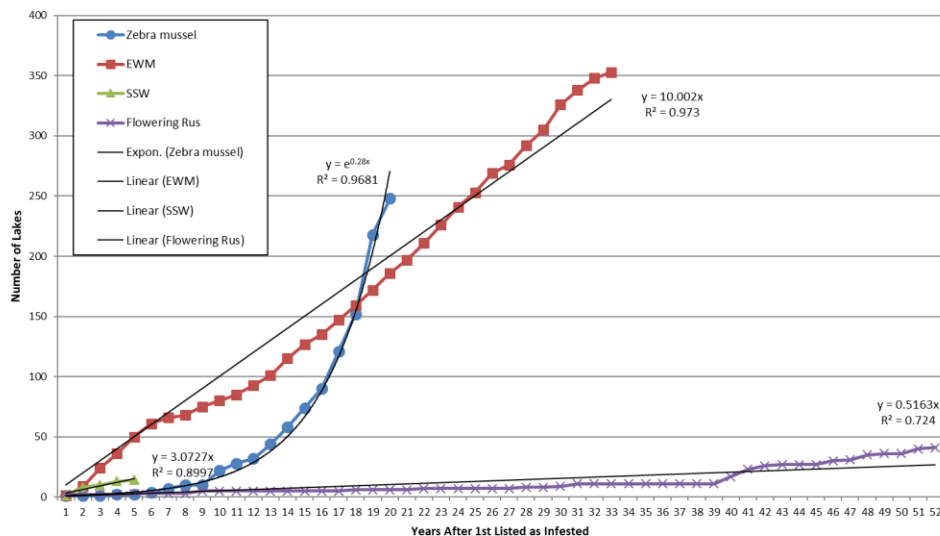
KEY TOPICS

- Latest on SSW work in MN & beyond
- SSW Prevention Pilot Study
- Early detection surveys
- Approvals needed to enact rapid response
- Rate of spread predictions
- Flowering Rush vs native species



Boats inspected in 2018 that entered from other states with SSW (noted with red dots)

EWM, FR, SSW, ZM Through 2019



Current known Flowering Rush locations