



Lake Minnetonka Conservation District (LMCD)

*To preserve and enhance the "Lake Minnetonka experience"*

# Lake Minnetonka Vegetation & AIS Master Plan

1<sup>st</sup> Public Meeting

June 18, 2019

6:00 -7:00 pm

*(Updated Links on 06/25/2019)*

# Meeting Agenda




- Introduction of Initiative
- Public Input

# Why a Lake- Wide Vegetation & AIS Master Plan



- AIS threats are real
- Unmanaged lake vegetation affects lake health/ecology, recreation, public safety, and economy
- Lake Minnetonka is regional and national water recreation hub- increased exposure
- Many partners needed to manage lake vegetation and AIS
- Provide a coordinated, comprehensive, scientific-based approach
- Contracted Experts: Emmons & Olivier Resources, Inc. and Blue Water Science

# Purpose of the Master Plan



**The Lake Minnetonka Vegetation and Aquatic Invasive Species (AIS) Master Plan** will address the dynamic lake management activities needed to preserve and enhance the lake's ecology, recreational, and economic experience. The project is just starting and completion is expected by the end of 2019.

**What's the Challenge?**

- AIS threats are real and imminent
- Unmanaged lake vegetation can affect lake health and ecology, recreation, public safety, and the economy
- Many partners are needed to manage lake vegetation and AIS for a unified vision, leaving no gaps

**Why LMCD is Taking the Lead?**

- LMCD represents the lake, has established partners and history
- LMCD is organizationally and legally structured to manage and administer funds/programs
- LMCD considers the interests of all stakeholders: cities, agencies, residents, visitors, organizations, businesses, and others in its decision-making process

**Our Approach?**

- Develop master plan to guide lake vegetation and AIS management activities using the most current scientific data and innovative approaches
- Develop action plan to address most imminent threat first- Starry Stonewort
- Compile and inventory existing lake vegetation and AIS data- develop public webmapping feedback tool
- Lake weed harvesting- determine if it is beneficial and key requirements for a successful program in relation to alternative control methods for existing and future threats
- Outreach, communication, stakeholder participation, public data collection

**Be Involved!**

**Public:**

- Be Informed - attend meetings, Website, Twitter, Facebook
- Be Engaged - provide input, webmapping feedback tool

**Advisory Groups:**

- Assist in decision making

**Implementation Partners:**

- Develop solutions, put plan in action

**1ST MEETING**  
**JUNE 18th**  
**6-7 pm**  
**LMCD OFFICE**

**LAKE MINNETONKA CONSERVATION DISTRICT**  
6341 Maywood Rd - 200  
Mound, Minnesota 55364  
Phone: 952-745-0783  
Website: www.lmcd.org  
Twitter: @LakeMinnetonkaCD  
Facebook: @LakeMinnetonkaConservationDistrict



June 18, 2019

- Provide baseline of information lake-wide and bay specific
- Identify measures to prevent, detect, respond, and manage vegetation
- Share information for unified, efficient approach
- Identify any gaps in system and process
- Identify funding opportunities and resources
- Review harvesting program and alternatives

# Who are partners in managing AIS and lake vegetation?



- Agencies
  - *Minnesota Dept. of Natural Resources-MN DNR*
  - *Minnehaha Creek Watershed District-MCWD*
  - *Three Rivers Park District-TRPD*
  - *Hennepin County Environmental Services - HCES*
  - *USGS*
  - *U of MN Fisheries and Wildlife*
  - *U of MN Aquatic Invasive Species Research Center-MAISRC*
- Cities
- Lake Minnetonka Association
- Lake Improvement Districts/Association (LID)
- Residents
- Recreationalists (fishing, watersports, clubs, swimmers, visitors, etc.)
- Businesses and Lake Service Providers
- Others...



# What Is The Schedule & Process?

- Project Completion
  - *May through December 2019*
  - *Phased items*
- Process
  - *Gather existing data*
  - *Collect data*
  - *Analyze data*
  - *Draft plan*
  - *Review of draft*
  - *Present final results*
  - *Living document to be updated over years*
  - *Identify funding opportunities*
  - *Implement plan*

# Public Engagement Process



- Stakeholders in Community Engagement Plan
  - *All the players previously mentioned*
- Engagement level
  - *Inform*
  - *Provide feedback*
  - *Assist in decision-making and developing solutions*
- Collected information will shape the plan
- Input regarding others who should be invited to participate

# Objectives for Today's Meeting

- Review accomplishments to date
  - *Community engagement plan*
  - *Compiling contacts of groups*
  - *Initiating review of harvesting*
  - *Gathering information for mapping*
  - *Preparing public feedback webmapping tool*
- Feedback about main concerns with AIS and lake vegetation on Lake Minnetonka
- Additional opportunities for input
  - *Upcoming meetings*
  - *Web-mapping Feedback Tool*
  - *Contact List - your phone, email, etc.*
  - *Website - [www.lmcd.org](http://www.lmcd.org)*
  - *Social Media*
    - [facebook.com/LakeMinnetonkaConservationDistrict](https://facebook.com/LakeMinnetonkaConservationDistrict)
    - [twitter.com/LakeMtkCD](https://twitter.com/LakeMtkCD)



# Social Pinpoint

## Get Involved -View our Public Engagement Map

Share your thoughts and ideas on the key areas of the project - We want to hear from you!



### Get Involved

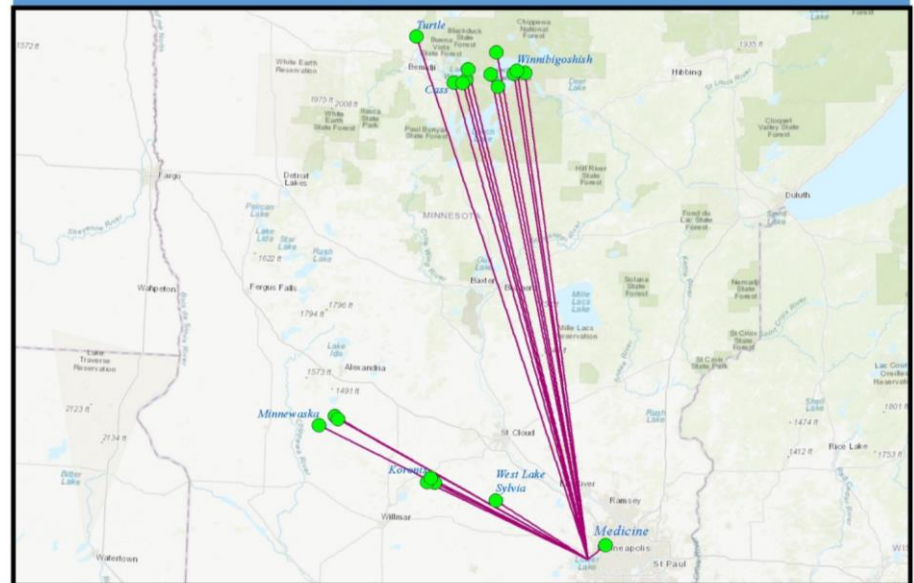
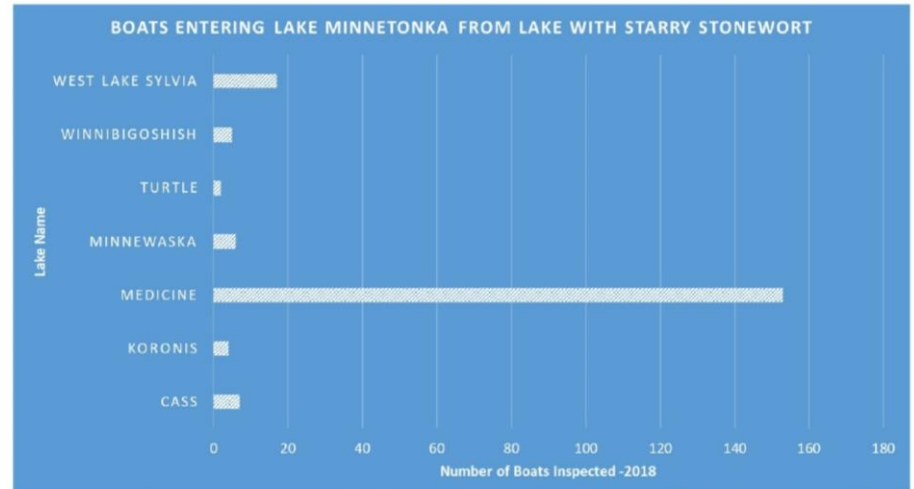
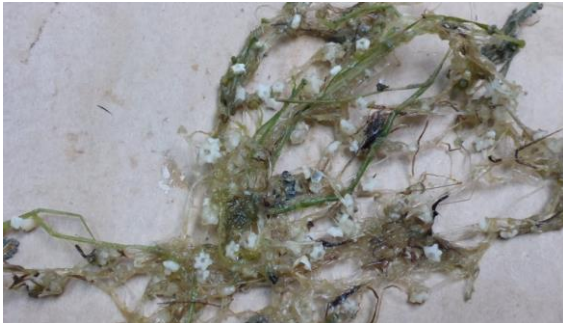
Share your thoughts and ideas on the key areas  
of the project

See Project Map

Social Pinpoint site is here:

<https://lmcd.mysocialpinpoint.com/Lake-Mtka-Vegetation-and-AIS>

# Starry Stonewort



**Starry Stonewort  
Lake Visited Prior  
to Coming to Lake  
Minnetonka -2018**



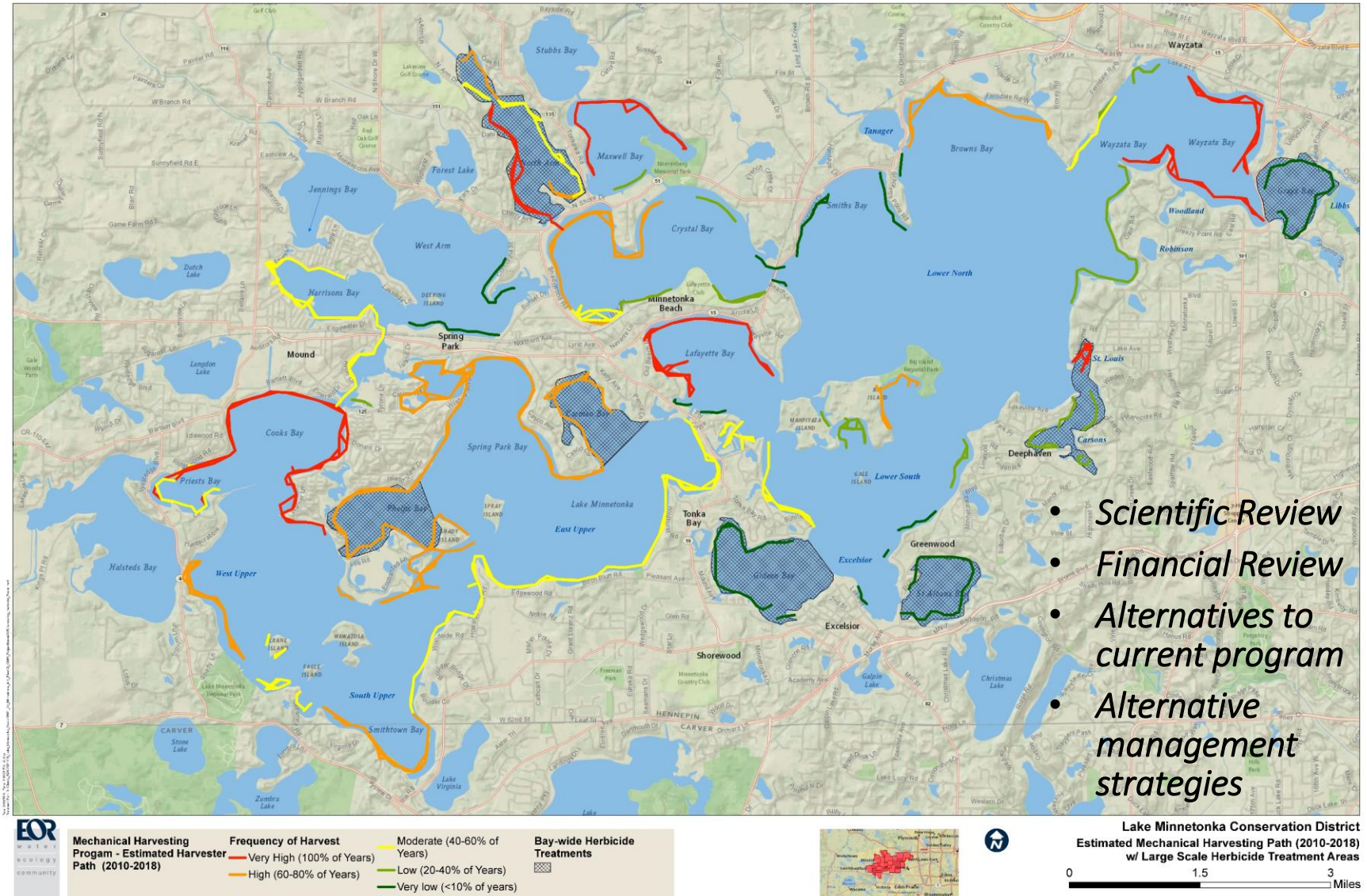
**Minnetonka Lake  
Watercraft Inspection  
Starry Stonewort  
Results (2018)**



Miles  
0 25 50 75 100  
Date: 5/30/2019



# Aquatic Vegetation Management Review



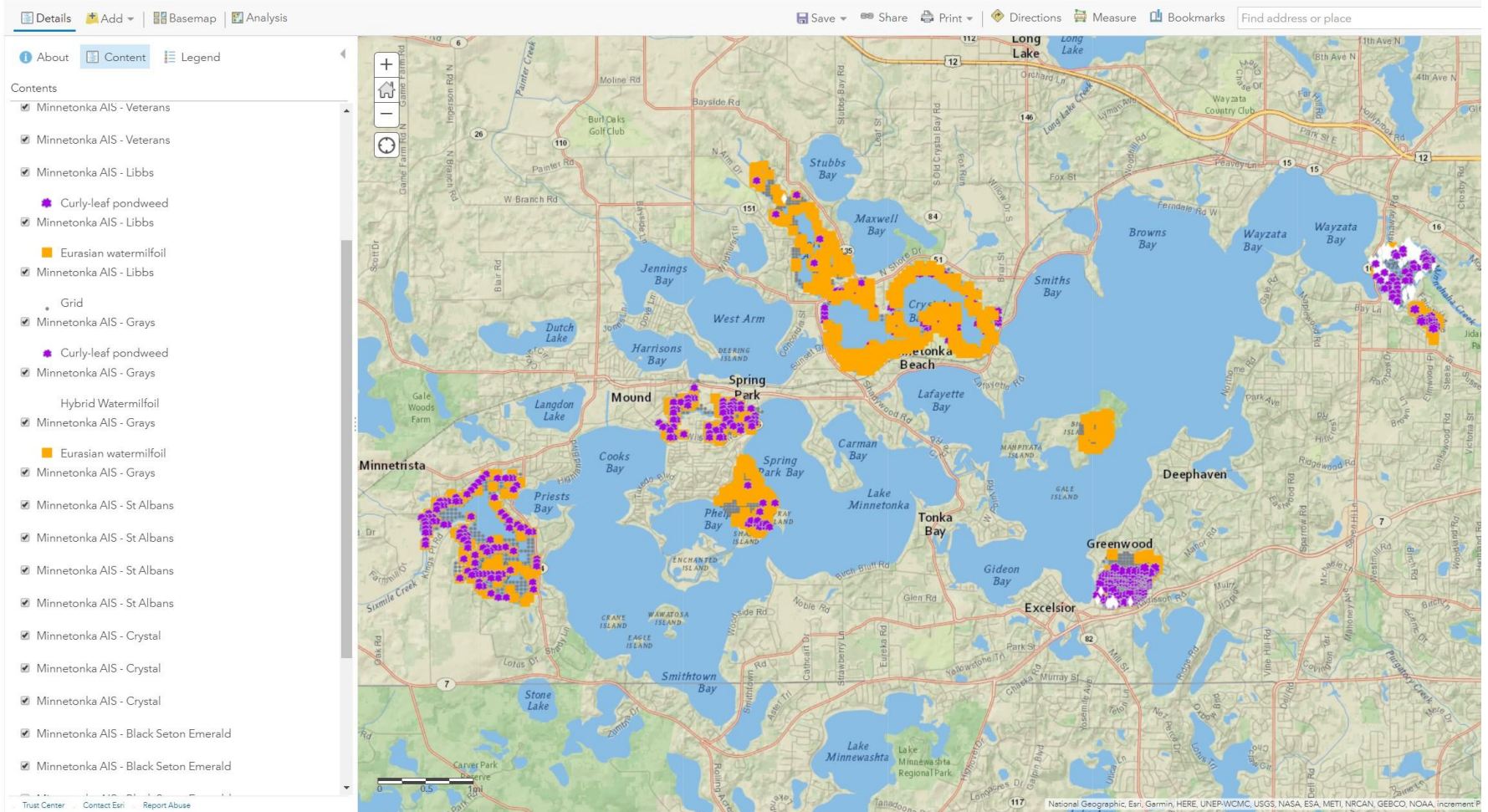
- Scientific Review
- Financial Review
- Alternatives to current program
- Alternative management strategies



# GIS Data Collection and Web-Mapping

Home ▾ Lake Minnetonka AIS points 

New Map ▾ Create Presentation

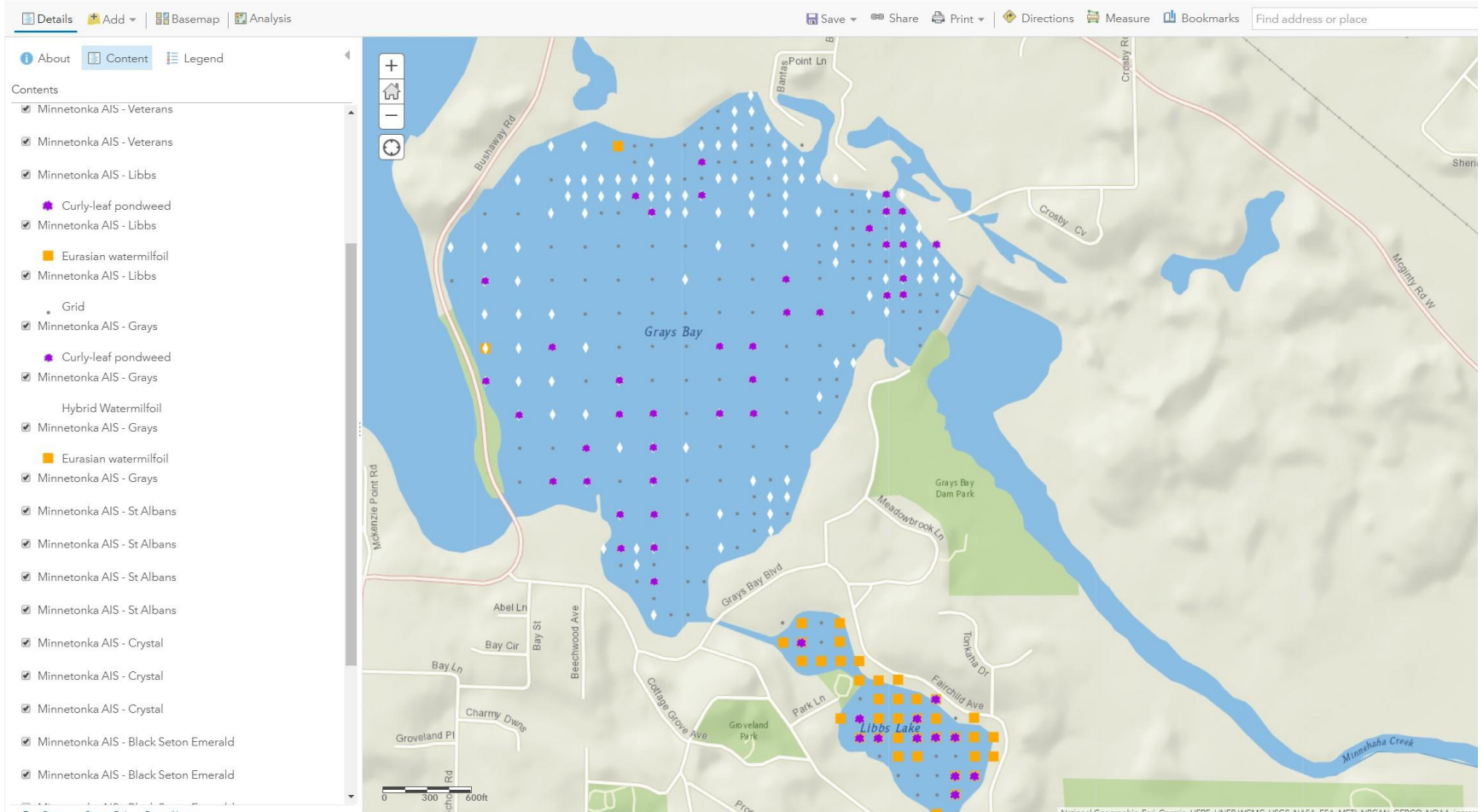


ArcGIS Online map is here: <https://arcg.is/11G4rb>

# GIS Data Collection and Web-Mapping

Home ▾ Lake Minnetonka AIS points [✎](#)

New Map ▾ Create Present



ArcGIS Online map is here: <https://arcg.is/11G4rb>

# Feedback and Stations



LMCD GENERAL STATION



STARRY STONEWORT  
AND IMMINENT INVASIVE  
SPECIES STATION



WEED HARVESTING  
STATION



STAKEHOLDER  
IDENTIFICATION AND  
CITIZEN ADVISORY





Lake Minnetonka Conservation District (LMCD)

*To preserve and enhance the "Lake Minnetonka experience"*

# Thank You

Keep in Contact--

Your Input Will Make a Difference